

## Winterberry 'Jolly Red' (*Ilex verticillata*)

6-10', upright broad rounded dense twiggy shrub.

CT native, found at woodland edges, swamps.

'Jolly Red' discovered in Bloomfield, CT.

Profuse and spectacular vivid red berries, without rival in the fall/winter landscape, fall through winter.

Lustrous leathery dark green oval leaves; burgundy in fall.

Silvery smooth bark.

Sun to partial shade, more fruit in more sun; moist to wet acidic soil, but tolerates dry soils. Can form thickets. Easy to grow.

Flowers/berries on new growth, so benefits from pruning in fall/winter of previous year.

Use as specimen for winter interest, in naturalized landscapes, for massing, screening, hedges, in foundations. A favorite for arrangements. Cut stems keep for months (if not placed in water).

Streamside buffers.

Attracts bees, including honey bee.  
Attracts butterflies; larval host to Henry's Elfin.  
Preferred winter food for Cedar Waxwings, Bluebirds, Mockingbirds, Brown Thrashers, Hermit Thrushes, Robins, Black Ducks, Flickers, and more.  
Cover and nesting for Red-winged Blackbirds.

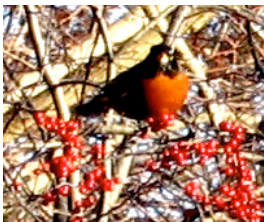


Photo 1:

Summerhill Nursery

[www.summerhillnursery.com/plants/PlantInfo.php?PID=70](http://www.summerhillnursery.com/plants/PlantInfo.php?PID=70)

Photo 3:

Pat Breen, Oregon State University

[oregonstate.edu/dept/ldplants/silverwr6.htm](http://oregonstate.edu/dept/ldplants/silverwr6.htm)

Photos, all others: North Central Conservation District

